

Camarillo Library

Wednesday Morning Group



Map tools for Genealogy

Software Maps for use with Genealogy

- Microsoft Streets & Trips - \$80
- ANI Map ver 3.0.2 – \$70
- Centennial Historical Atlas – \$70
- Map My Family Tree - \$65

Streets & Trips Uses

- Planing trips
- Checking address locations
- Checking for towns and city locations
- Verifying City or County data

Streets & Trips

Planning of Road Trips

▲

▼

☰

■

á

é

í

ó

ú

ñ

Given

Donald Dick

!

Surname

ROZENBERG

▼

Title Pre.

Title Suf.

Born

9 Sep 1909

Chr

Died

13 Mar 1997

Buried

18 Mar 1997

Living?

☐ Yes

☒ No

☒ M

☐ E

☐ ?

107

87

87

Save

Cancel

Help

107

87

87

Events/Facts

Age	Event/Fact	Date	Desc/Place/Notes					
37	Residence	1946	696 F St Colton, CA / Colton, San Bernar					
38	Residence	1947	177 West D , El Centro, California					
39	Residence	1948	7432 San Francisco / Highland, San Bern					
41	Residence	1950	8405 E Alaemda St, Downey, California Ir					
43	Residence	1952	5509 Castana Ave, Lakewood, California					
45	Residence	1954	819 East D St Colton CA / Colton, San Be					
49	Residence	1958	800 Sperry Dr Colton CA / Colton / Betwe					
50	Residence	1959	738 Canary St / Colton, San Bernardino, i					
88	Residence	1997	2354 Mountain Woods St, Colton, Califorr					
11	Religion	11 Feb 1954	Jewell Memorial Methodist Church / Colton					

Add

Edit

Options

Share

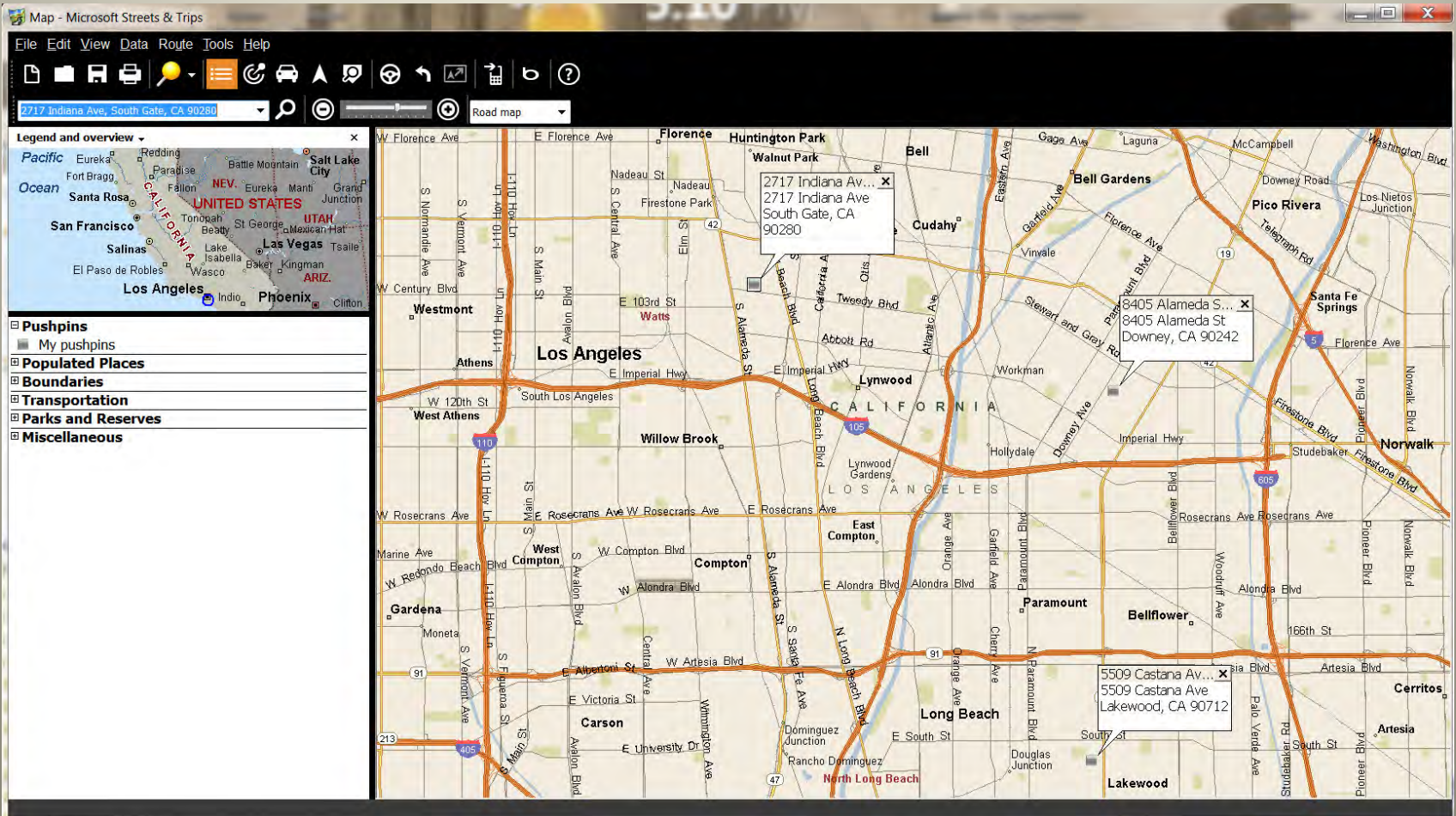
Set Order

▲

▼

Streets & Trips

Planning of Road Trips



Streets & Trips

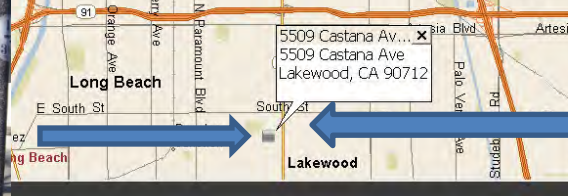
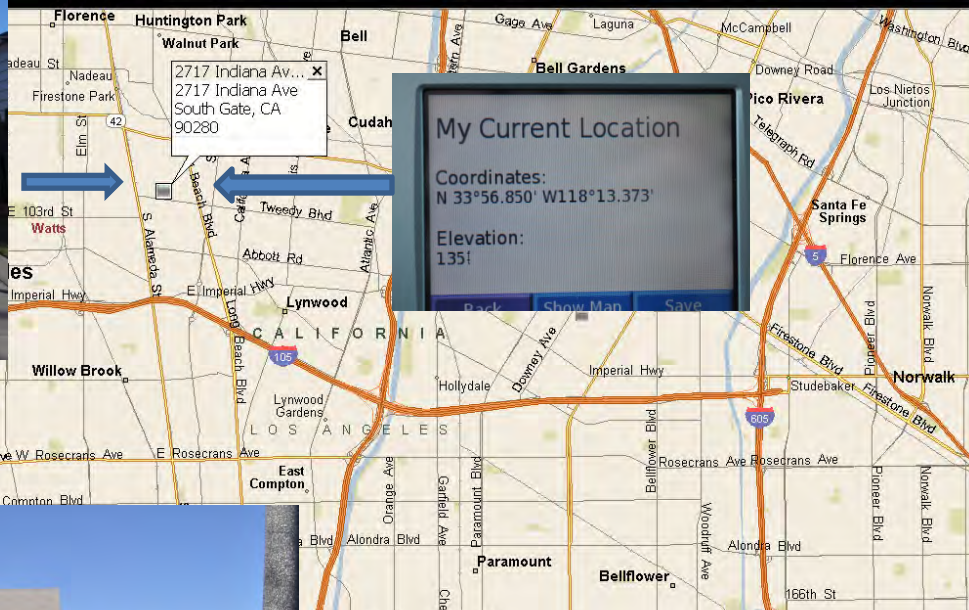
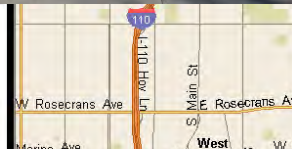
Finding Locations

Map - Microsoft Streets & Trips

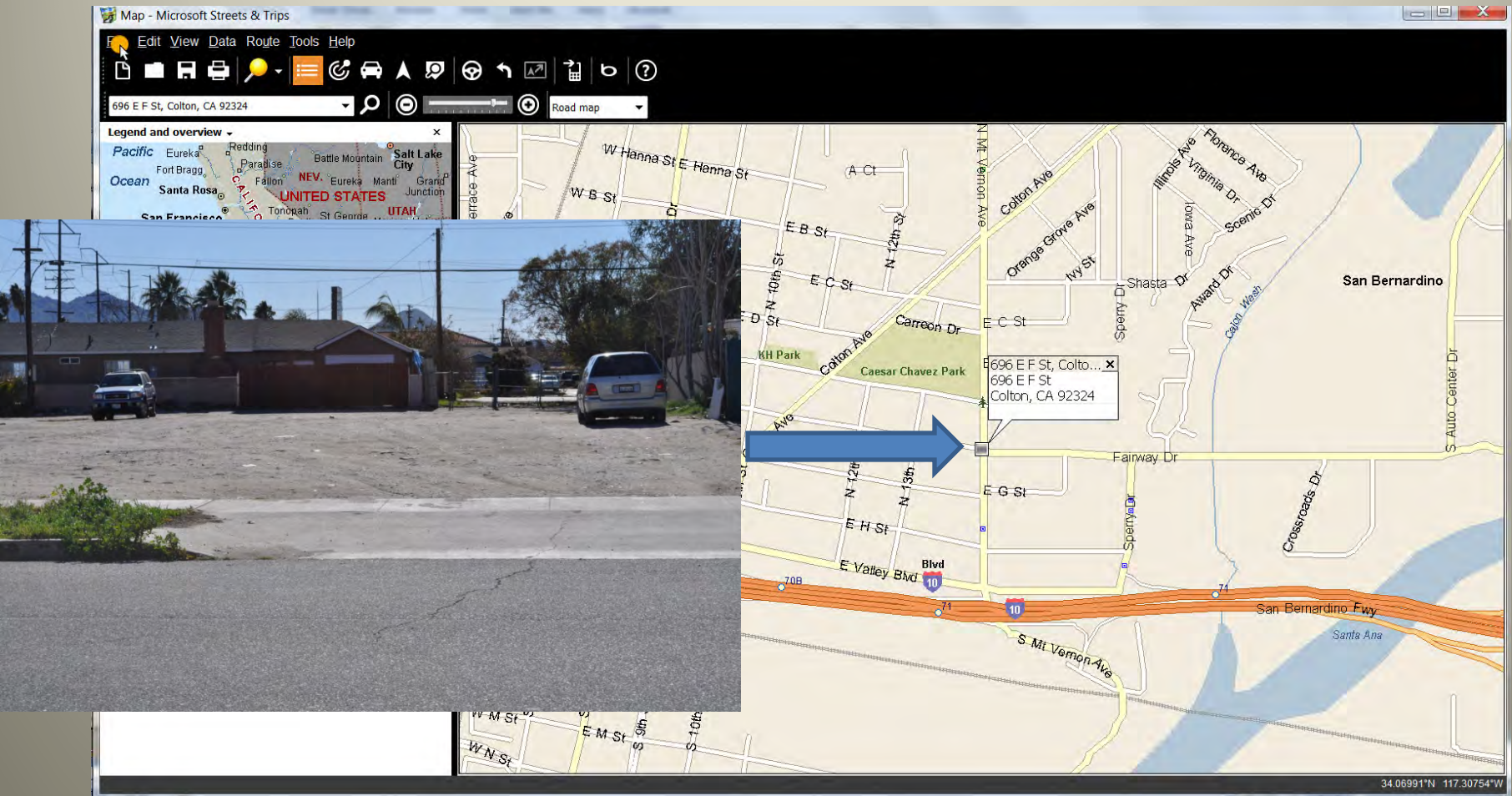
File Edit View Data Route Tools Help



Miscellaneous

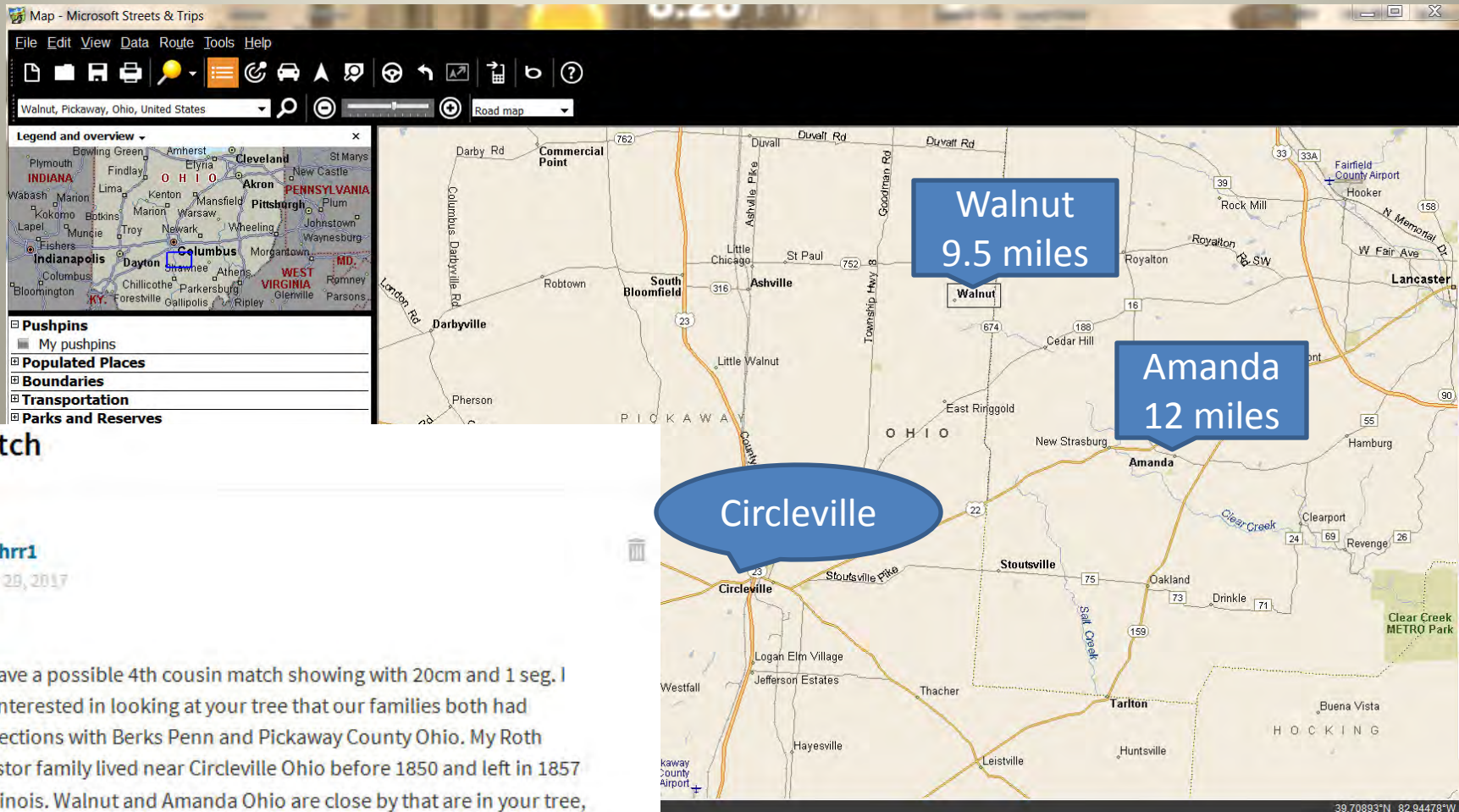


Streets & Trips Uses Finding Locations



Streets & Trips Uses

Checking town locations



DNA Match



rothrr1

Mar 29, 2017

Hi

We have a possible 4th cousin match showing with 20cm and 1 seg. I was interested in looking at your tree that our families both had connections with Berks Penn and Pickaway County Ohio. My Roth ancestor family lived near Circleville Ohio before 1850 and left in 1857 for Illinois. Walnut and Amanda Ohio are close by that are in your tree, but I could not find any surnames that connected with my tree.

Streets & Trips Uses City or County Checking

Map - Microsoft Streets & Trips

File Edit View Data Route Tools Help

Miller, Hand, South Dakota, United States

Legend and overview

- Pushpins
 - My pushpins
- Populated Places
- Boundaries
- Transportation
- Parks and Reserves

Great-grandaunt

Female

1 2 3 4 5 6 7 8 9

Magdalena FUCHSER

Born 8 Nov 1851, Linden, Switzerland

Chr

Died 21 Oct 1924, Miller, , South Dakota, USA

Bur

DthCau

Miller, Hand, South Dakota, United States

St Lawrence

Miller Municipal Airport

Vayland

44.53274°N 98.86218°W

ANI Map

- County boundary changes from colonial time to present
- Locate old towns that have disappeared
- See locations that have changed counties over time

ANI Map

- Locations of events should be recorded with with county of corresponding date.
 - Records are with the courthouse
 - Can be a problem if county lines change
 - ANI Map can assist in determing correct county

ANI Map

Goochland County Event 1742

Parents

Captain Thomas FORD (1700-1750)

Keturah Sarah WYNNE (1700-After 1750)+



5th great-grandmother

Wife

1

2

3

4

5

6

7

8

9



Jane "Jennie" FORD

Born 1742, Dover, Goochland, Virginia, USA

Chr

Died 27 Jul 1813, Bryant Station, Fayette, Kentucky, USA

Bur

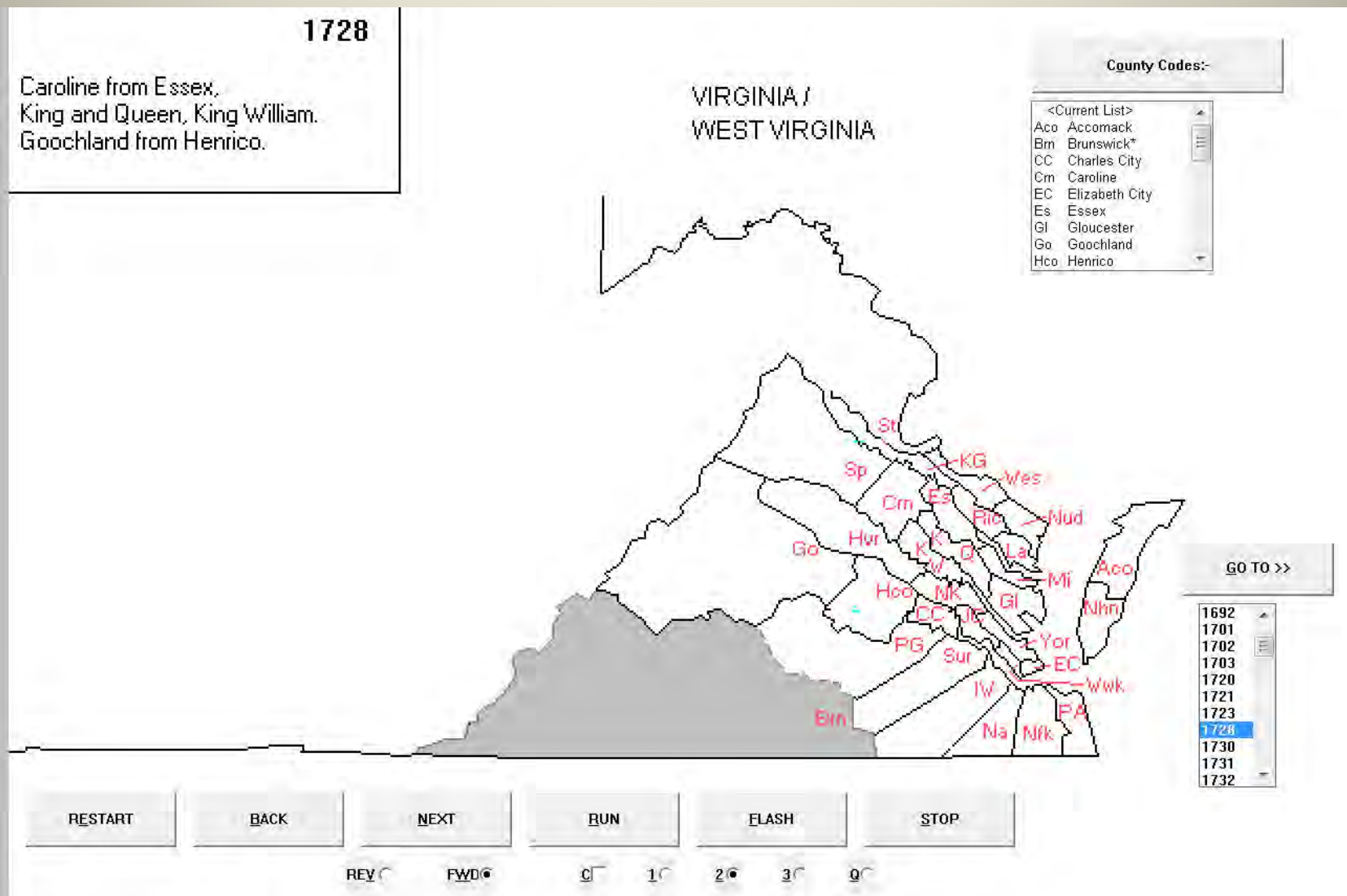
Bryan Station, Fayette, Kentucky, USA

DthCau



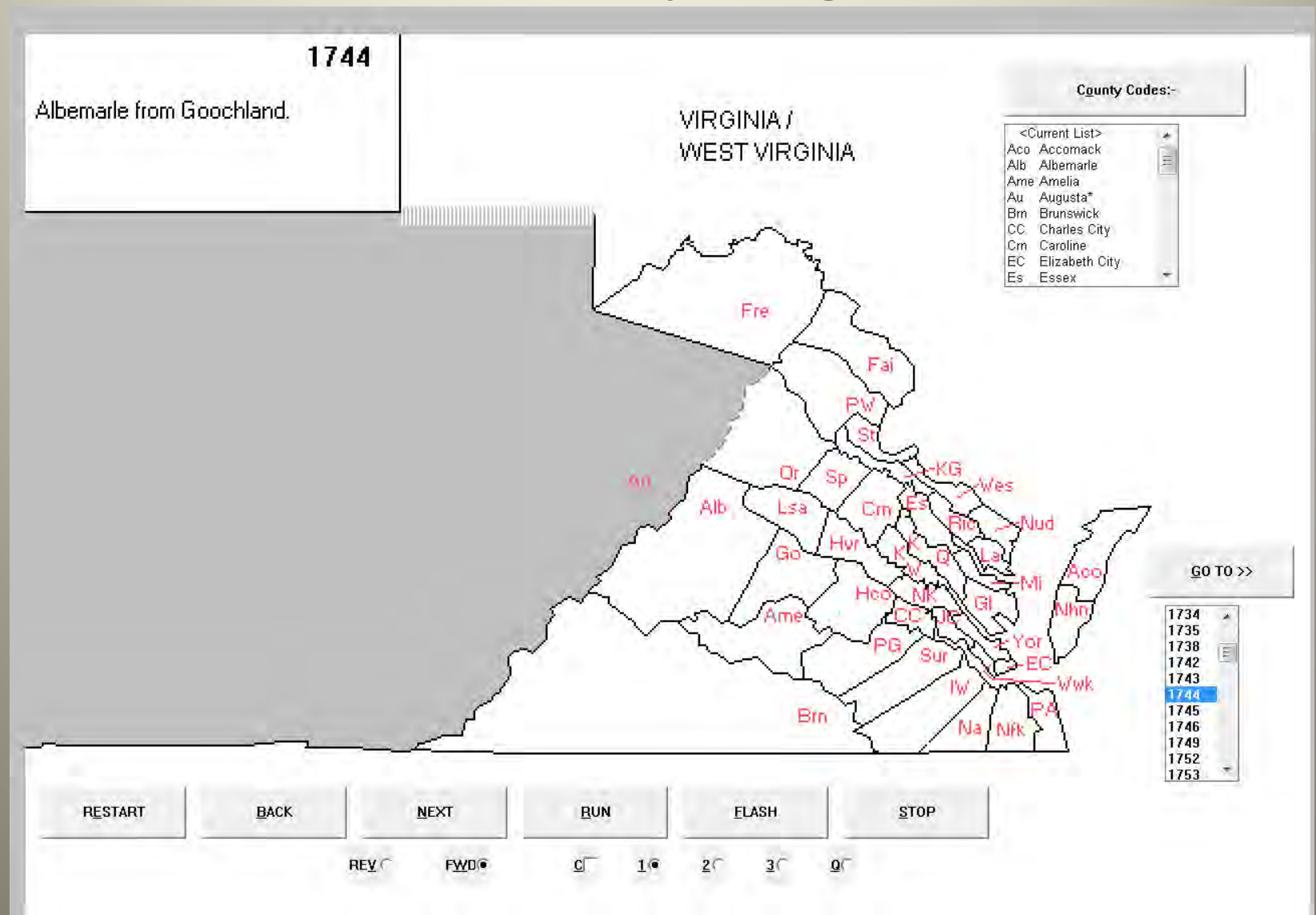
ANI Map

Goochland County Virginia 1728



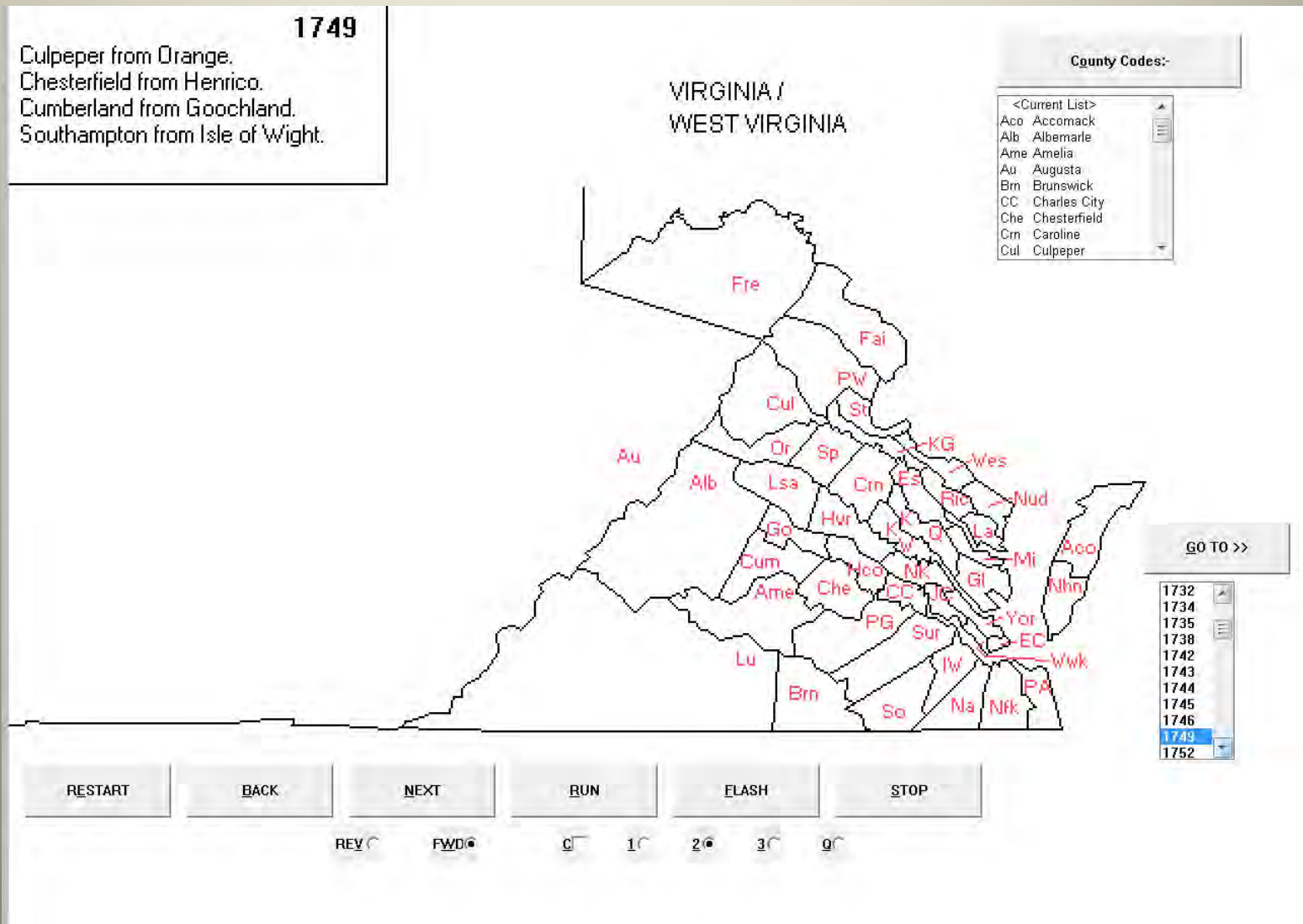
ANI Map

Goochland County Virginia 1744



ANI Map

Goochland County Virginia 1749



ANI Map

Virginia Counties 1900

Bland gained from Giles.
The eighteen Virginia
incorporated cities first
recognized as independent
of counties in the
U. S. Census of 1900.

1900

Note; The formalization of the independent
status of Virginia cities evolved by stages
through legislative acts and court decisions
starting in 1887 and concluding with the
Constitution of 1902

County Codes:-

<Current List>
Aco Accomack
Alb Albemarle
Ale Alexandria
All Alleghany
Ame Amelia
Amh Amherst
Ap Appomattox
Au Augusta
Bar Barbour(WV)

GO TO >>

1872
1873
1880
1882
1888
1895
1900
1902
1905
1906
1907

RESTART

BACK

NEXT

RUN

FLASH

STOP

ANI Map

Goochland County Event 1742

Parents

Captain Thomas FORD (1700-1750)

Keturah Sarah WYNNE (1700-After 1750)+



5th great-grandmother

Wife

1

2

3

4

5

6

7

8

9



Jane "Jennie" FORD

Born 1742, Dover, Goochland, Virginia, USA

Chr

Died 27 Jul 1813, Bryant Station, Fayette, Kentucky, USA

Bur

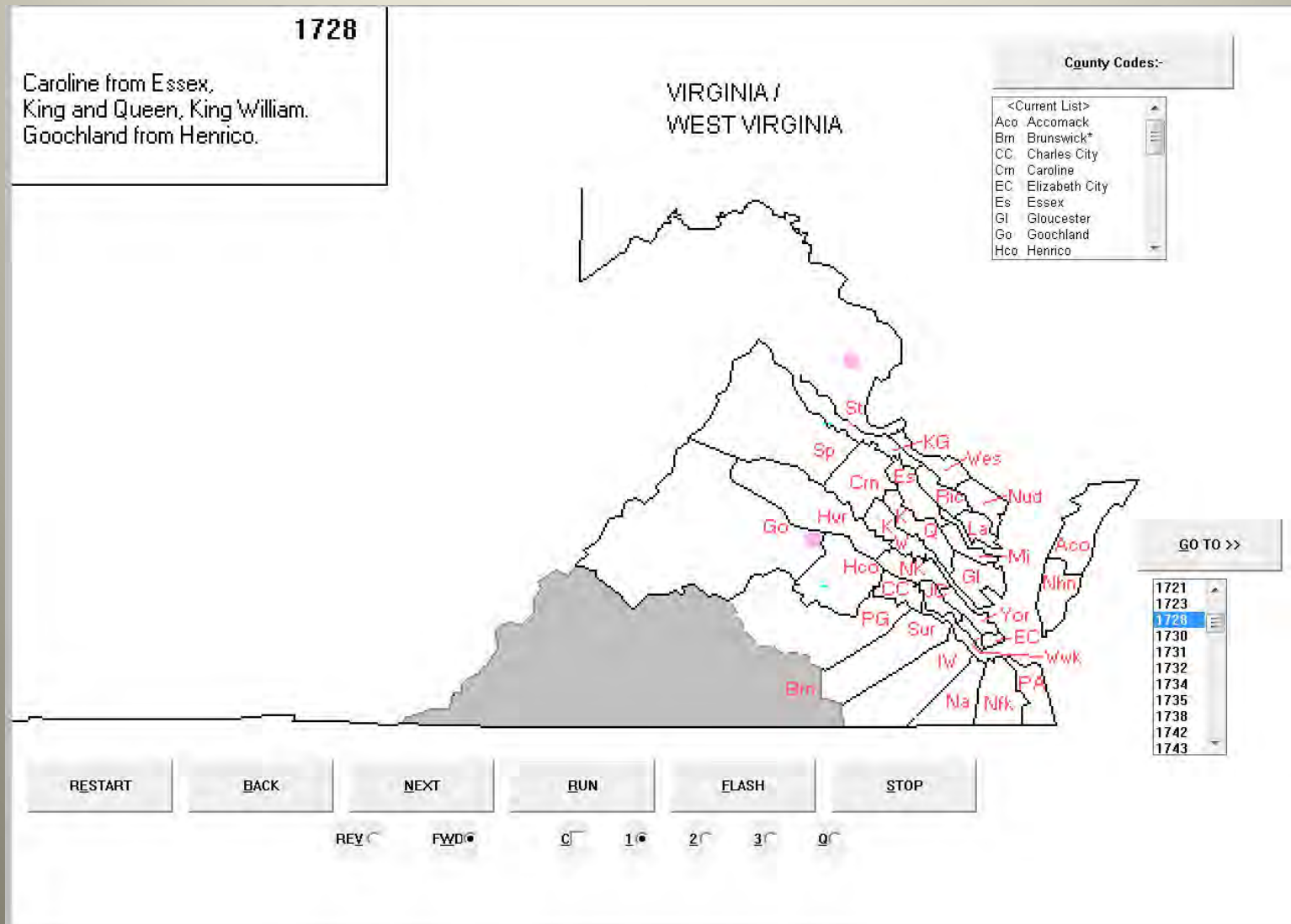
Bryan Station, Fayette, Kentucky, USA

DthCau



ANI Map 1742

Dover Run Goochland County Virginia



Centennial Historical Atlas

- Dynamic animated historical atlas
- Time lapse of Europe and Middle East history
- Europe and Middle East 1000 AD to Present
- Over 10,000 border changes

Centennial Historical Atlas 1150



Eleanor of Aquitaine

Not logged in | [Talk](#) | [Contributions](#) | [Create account](#) | [Log in](#)



WIKIPEDIA
The Free Encyclopedia

[Main page](#)
[Contents](#)
[Featured content](#)
[Current events](#)
[Random article](#)
[Donate to Wikipedia](#)
[Wikipedia store](#)

[Interaction](#)

[Help](#)
[About Wikipedia](#)
[Community portal](#)
[Recent changes](#)
[Contact page](#)

[Tools](#)

[What links here](#)
[Related changes](#)
[Upload file](#)
[Special pages](#)
[Permanent link](#)
[Page information](#)
[Wikidata item](#)

[Article](#) [Talk](#)

[Read](#) [Edit](#) [View history](#)

Eleanor of Aquitaine

From Wikipedia, the free encyclopedia

Eleanor of Aquitaine (*French*: *Aliénor d'Aquitaine*, *Éléonore*, *Latin*: *Alienora*; 1122 – 1 April 1204) was a [Queen consort](#) of [France](#) and [England](#). As a member of the [Ramnulfids](#) ("House of [Poitiers](#)") rulers in southwestern France, she was one of the most powerful and wealthiest women in western Europe during the [High Middle Ages](#). She inherited the [Duchy of Aquitaine](#) from her father, [William X](#), in 1137, and by successive marriages became Queen of [France](#) (1137–1152) and then of [England](#) (1154–1189). She was *patron* of literary figures such as [Wace](#), [Benoît de Sainte-Maure](#), and [Bernart de Ventadorn](#). She led armies several times in her life and was a leader of the [Second Crusade](#).

As Duchess of Aquitaine, Eleanor was the most eligible bride in Europe. Three months after she became duchess, she married King [Louis VII of France](#), son of her guardian, [King Louis VI](#). As [Queen of France](#), she participated in the unsuccessful Second Crusade. Soon afterwards, Eleanor sought an [annulment](#) of her marriage,^[1] but her request was rejected by [Pope Eugene III](#).^[2] However, after the birth of her second daughter [Alix](#), Louis agreed to an annulment, as fifteen years of marriage had not produced a son.^[3] The marriage was annulled on 11 March 1152 on the grounds of [consanguinity](#) within the fourth degree. Their daughters were declared legitimate and custody was awarded to Louis, while Eleanor's lands were restored to her.

As soon as the annulment was granted, Eleanor became engaged to the [Duke of Normandy](#), who became King [Henry II of England](#) in 1154. Henry was her third cousin and eleven years younger. The couple married on [Whitsun](#), 18 May 1152, eight weeks after the annulment of Eleanor's first marriage, in a cathedral in [Poitiers](#), France. Over the next thirteen years, she bore Henry eight children: five sons, three of whom would become kings; and three daughters. However, Henry and Eleanor eventually became estranged. Henry imprisoned her in 1173 for supporting their son [Henry](#)'s revolt against him. She was not released until 6 July 1189, when Henry died and their second son, [Richard the Lionheart](#), ascended the throne.

Now [Queen dowager](#), Eleanor acted as [regent](#) while Richard went on the [Third Crusade](#); on his return Richard was captured and held prisoner. Eleanor lived well into the reign of her youngest son, [John](#). She outlived all her children except for John and [Eleanor](#).

Eleanor of Aquitaine



Eleanor's effigy at Fontevraud Abbey

Duchess of Aquitaine

Reign 9 April 1137 – 1 April 1204

Predecessor [William X](#)

Successor [John](#)

Queen consort of the Franks

Tenure 1 August 1137 – 21 March 1152

Queen consort of England

Tenure 25 October 1154 – 6 July 1189

Coronation 19 December 1154

Born 1122

Centennial Historical Atlas 1153



Centennial Historical Atlas 1273



Centennial Historical Atlas 1850-1950



Centennial Historical Atlas 1850-1950



Map My Family Tree

- Reads many popular genealogy file formats
 - Roots Magic
 - Legacy Family Tree
 - Ancestry
 - Heritage Family Tree Deluxe

Map My Family Tree

- See Ancestor lives on a map
 - births
 - marriages
 - deaths
 - migrations

Map My Family Tree

Map My Family Tree - Breedlove DNA Cousin Listings

File Edit View Gazetteer Map Filter Help

1655 - 1675

Sort Geographically Show All

World

Events without a place

United States

Ambiguous

Alabama

Alaska

Arkansas

California

Colorado

District Of Columbia

Florida

Georgia

Illinois

Kansas

Kentucky

Louisiana

Maryland

Missouri

Montana

Nebraska

North Carolina

North Dakota

Ohio

Oklahoma

Oregon

Pennsylvania

South Carolina

South Dakota

Tennessee

Texas

Virginia

Washington

West Virginia

Wisconsin

Wyoming

United States



All events in United States

Events on map

RIN	Name	Event	Date	Place
310	Breedlove, John B.	Marriage	20 May 1846	, Kanawha, Virginia, USA
311	Huffman, Sarah	Marriage	20 May 1846	, Kanawha, Virginia, USA
311	Huffman, Sarah	Birth	1816	, Kanawha, Virginia, USA
53	Breedlove, Nancy	Death	1 Nov 1857	Sinking Creek, Simpson, Kentucky, USA
332	Hutchens, Charles Frances	Birth	11 May 1933	Trenton, Grundy, Illinois, USA
217	Hairston, Anna Amy	Birth	5 Sep 1791	, , Alabama, USA
260	Baker, Joseph Dubose	Birth	17 Sep 1830	, , Alabama, USA
215	Fletcher, Sarah "Sally"	Death	1797	, , Alabama, USA
224	Voyles, Alice Aquill	Birth	10 May 1892	, , Arkansas, USA
257	Breedlove, Frances L.	Birth	1804	, , Georgia, USA
255	Breedlove, John Watkins	Marriage	5 Mar 1789	, , Georgia, USA
256	Parker, Nancy	Marriage	5 Mar 1789	, , Georgia, USA
218	Breedlove, Penelope	Marriage	1843	, , Illinois, USA
332	Hutchens, Charles Frances	Death	10 Oct 1997	, , Illinois, USA
219	Simpkins, Thomas	Marriage	1843	, , Illinois, USA
222	Voyles, David Anderson	Birth	1856	, , Illinois, USA
271	Witherall, Flora M.	Birth	abt 1867	, , Illinois, USA

Map My Family Tree

Map My Family Tree - Breedlove DNA Cousin Listings

File Edit View Gazetteer Map Filter Help

1655 - 1675

Sort Geographically Show All

- Alabama
- Alaska
- Arkansas
- California
- Colorado
- District Of Columbia
- Florida
- Georgia
- Illinois
- Kansas
- Kentucky
- Louisiana
- Maryland
- Missouri
- Montana
- Nebraska
- North Carolina
- North Dakota
- Ohio
- Oklahoma
- Oregon
- Pennsylvania
- South Carolina
- South Dakota
- Tennessee
- Texas
- Virginia
- Washington
- West Virginia
- Wisconsin
 - ,, Wisconsin, USA [NON-SPECIFIC I
 - Crawford County
 - , Crawford, Wisconsin, USA [NO
 - Marietta, , Wisconsin, USA [INC

Wisconsin, United States

0 50 100 150 200 mi

All events in Wisconsin Events on map

RIN	Name	Event	Date	Place
27	Elliott, Percilla Pearle	Death	29 Dec 1969	, , Wisconsin, USA
27	Elliott, Percilla Pearle	Birth	1883	, , Wisconsin, USA
28	Rose, Burlie	Birth	abt 1882	, , Wisconsin, USA
31	Vannata, Darlene Ruth	Birth	16 Nov 1934	, , Wisconsin, USA
25	Elliott, Daniel Quick	Birth	abt 1856	, , Wisconsin, USA
24	Elliott, Julia Ann	Birth	Jan 1847	, , Wisconsin, USA
22	Elliott, William James	Death	5 May 1879	, Crawford, Wisconsin, USA
28	Rose, Burlie	Death		, Crawford, Wisconsin, USA
29	Rose, Cammella	Birth	abt 1914	, Crawford, Wisconsin, USA
30	Vannata, Virgil Gilbert	Birth	15 Jul 1910	Marietta, , Wisconsin, USA
41	Elliott, Stella	Birth	21 Jul 1880	Scott, Crawford, Wisconsin, USA

Map My Family Tree

Map My Family Tree - Breedlove DNA Cousin Listings

File Edit View Gazetteer Map Filter Help



1655 - 1675

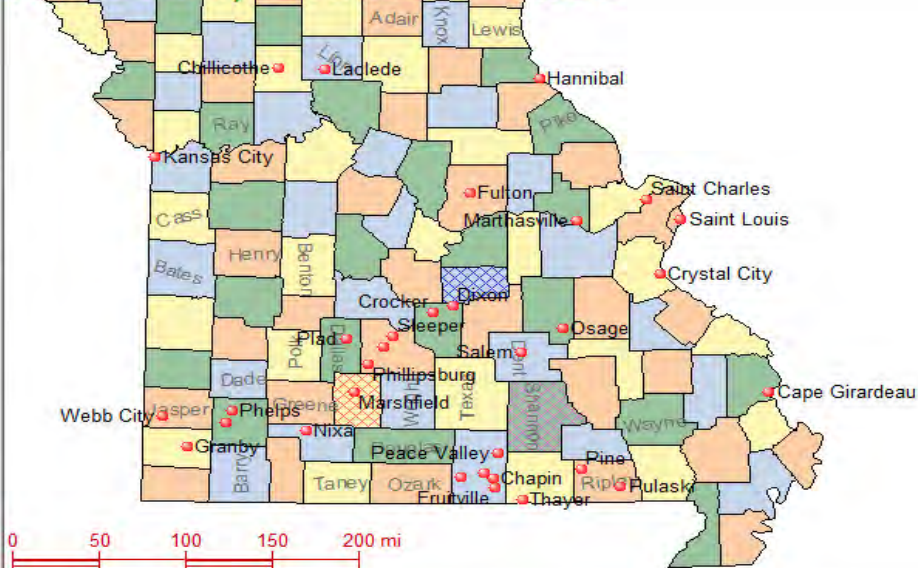
Sort Geographically Show All

- [-] District Of Columbia
- [-] Florida
- [-] Georgia
- [-] Illinois
- [-] Kansas
- [-] Kentucky
- [-] Louisiana
- [-] Maryland
- [-] Missouri

Missouri, USA [NON-SPECIFIC PL

- [-] Ambiguous
- [-] Callaway County
- [-] Cape Girardeau County
- [-] Christian County
- [-] City Of St Louis
- [-] Crawford County
- [-] Dallas County
- [-] Dent County
- [-] Howell County
- [-] Jackson County
- [-] Jasper County
- [-] Jefferson County
- [-] Laclede County
- [-] Lawrence County
- [-] Linn County
- [-] Livingston County
- [-] Maries County
- [-] Marion County
- [-] Mercer County
- [-] Newton County
- [-] Oregon County
- [-] Pulaski County
- [-] Ripley County

Missouri, United States



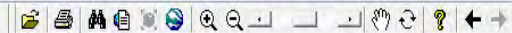
All events in Missouri Events on map

RIN	Name	Event	Date	Place
89	Lowery, Thomas Richardson	Marriage	22 Jul 1846	, Callaway, Missouri, USA
90	Nicholson, Sarah Jane	Marriage	22 Jul 1846	, Callaway, Missouri, USA
89	Lowery, Thomas Richardson	Death	22 Mar 1914	, Callaway, Missouri, USA
59	Dawson, Hannah S.	Death	29 Nov 1887	, Crawford, Missouri, USA
58	Breedlove, William Martin	Death	12 Aug 1897	, Crawford, Missouri, USA
355	SWOFFERD, Isaac N.	Marriage	4 Jul 1867	, Dent, Missouri, USA
354	BREEDLOVE, Agnes C.	Marriage	4 Jul 1867	, Dent, Missouri, USA
119	Pentecost, James Eli Shields	Marriage	30 Oct 1890	, Howell, Missouri, USA
44	Wright, Eliza Jane	Death	17 Nov 1911	, Howell, Missouri, USA
165	Pentecost, David Archie	Birth	22 Jan 1893	Howell, Missouri, USA

Map My Family Tree

Map My Family Tree - Breedlove DNA Cousin Listings

File Edit View Gazetteer Map Filter Help



1655 - 1675

Sort Geographically Show All

- District Of Columbia
- Florida
- Georgia
- Illinois
- Kansas
- Kentucky
- Louisiana
- Maryland
- Missouri

., Missouri, USA [NON-SPECIFIC PL

Ambiguous

- Callaway County
- Cape Girardeau County
- Christian County
- City Of St Louis
- Crawford County
- Dallas County
- Dent County
- Howell County
- Jackson County
- Jasper County
- Jefferson County
- Laclede County

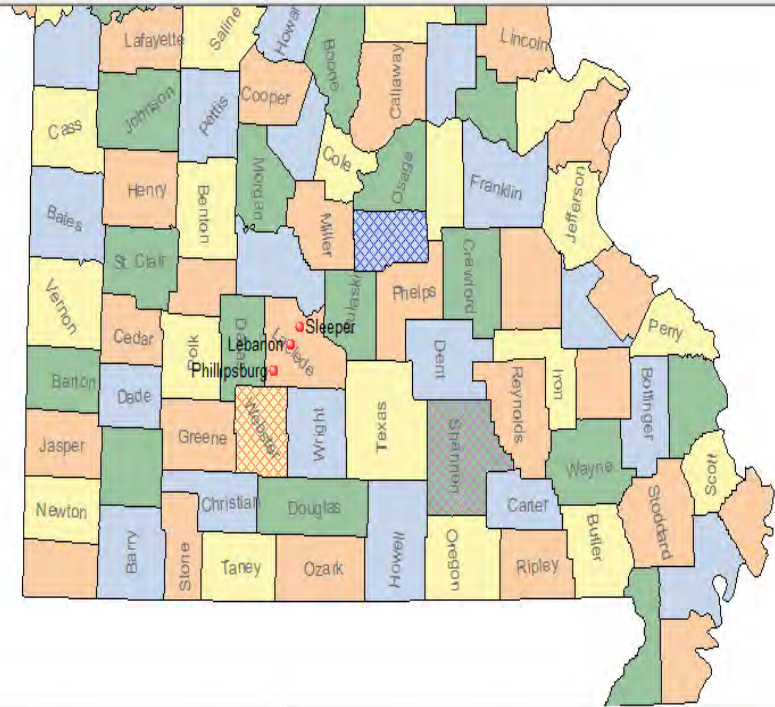
Sleeper, , Missouri, USA [INCOM

Lebanon, Laclede, Missouri, USA

Phillipsburg, Laclede, Missouri, US

- Lawrence County
- Linn County
- Livingston County
- Maries County
- Marion County

Missouri, United States



All events in Laclede County

Events on map

RIN	Name	Event	Date	Place
204	Hudson, Amy Fay	Birth	1 Jun 1903	Sleeper, , Missouri, USA
199	Breedlove, Thomas Davis	Death	6 Jun 1921	Lebanon, Laclede, Missouri, USA
87	Breedlove, Cindarella	Death	22 Apr 1858	Lebanon, Laclede, Missouri, USA
69	Breedlove, Nancy Ann	Birth	5 Nov 1883	Lebanon, Laclede, Missouri, USA
55	Lowery, Elizabeth Carr	Death	25 Jul 1892	Lebanon, Laclede, Missouri, USA
54	Breedlove, Warren Jackson	Death	19 Dec 1892	Lebanon, Laclede, Missouri, USA
268	Breedlove, Giles T.	Death	14 Jan 1903	Phillipsburg, Laclede, Missouri, USA

Questions or Comments??